

The background is a deep blue ocean with a light blue beam of light shining down from the top center. A large, dark grey whale with a mottled pattern is swimming diagonally from the top left towards the bottom right. A smaller, lighter grey calf is swimming just below and behind the adult whale. Several jellyfish are scattered throughout the scene: a large white one with long tentacles in the upper right, a smaller blue one in the upper right, a white one with long tentacles in the middle right, a small blue one in the lower left, and a blue one in the lower right. There are also some white and blue branching coral-like structures at the bottom left and bottom right.

Little Whale

JO WEAVER

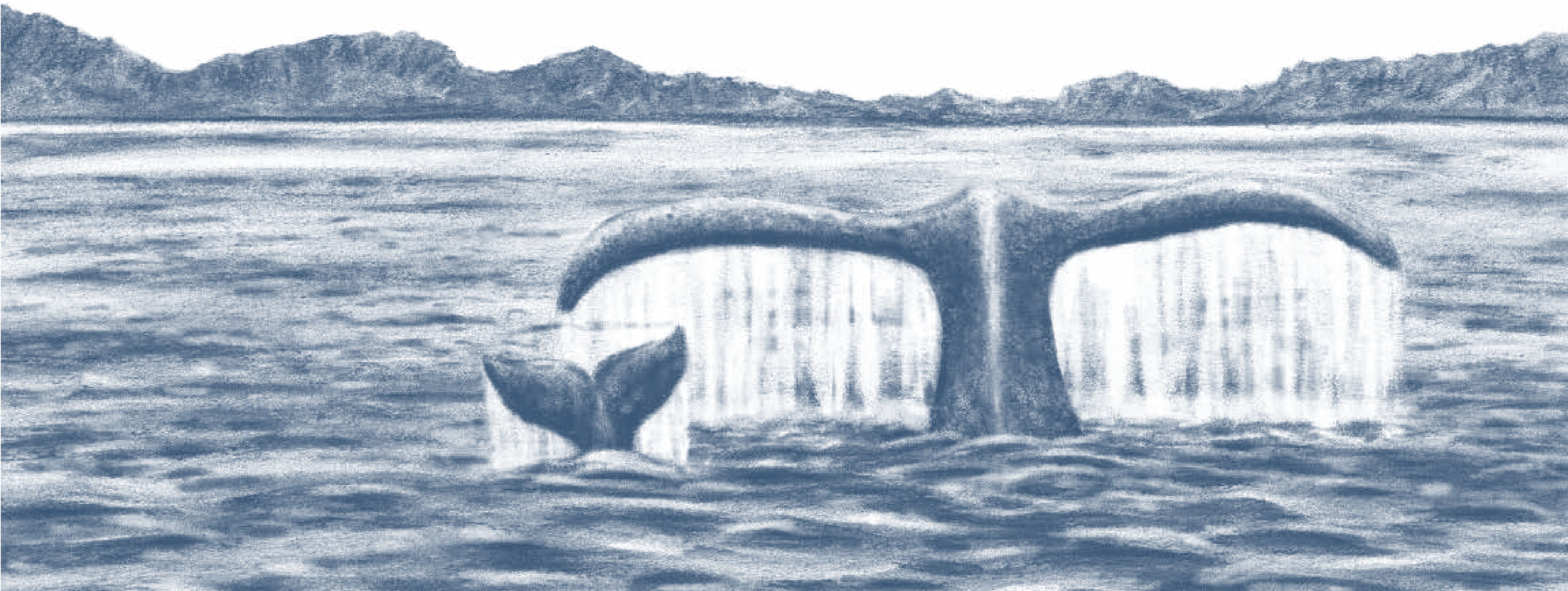


Gray Whale led her baby out of the shallows
and into the warm southern sea.

“Where are we going?” asked Little Whale.

“Follow me,” said Gray Whale.

The rest of their family had already left to find food in the cool, rich waters of the North. It was time to join them.



“We’re going on a long journey, Little Whale,”
sang Gray Whale. “We’re going home.”

